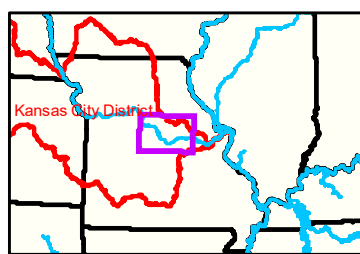


Notes

Boonville Gage = 9.7 at time of collection 03 May 2021"

Gage_L



LEGEND

	< 8		< 8 ft		Green Passing		Green		AIS Green CAN
	8 - 9		8 - 9 ft		Red Passing		Red		AIS Red NUN
	9 - 9.5		9 - 10 ft		Green Crossing		Green CAN		Red NUN
	9.5 - 10		10 - 12 ft		Red Crossing		Junction		
	10 - 12		River Mile						
	12 - 14		Sailing Line						
	14 - 16		BSNP Structure						
	> 16		Levee						

Buoy

	AIS Green CAN
	AIS Red NUN
	Green CAN
	Red NUN

Scale: 0 312.5 625 937.5 1,250 2,500 Feet

Vertical Datum: Soundings are shown in feet and indicated depths are referenced to water surface at time of collection.

The information depicted on this map represents the results of a survey conducted on the date indicated and can only be considered to represent the general condition existing at that time.

The location of navigation aids are based on and provided by the U.S. Coast Guard.



DISCLAIMER: The U.S. Army Corps of Engineers (USACE) provides this information as a service to the public. It is not intended to be used for any purpose other than that for which it was intended. The USACE makes no warranty, express or implied, regarding the accuracy, reliability, or completeness of the information. The user assumes all liability for any use of the information. The USACE is not responsible for any damage or loss resulting from the use of this information. The USACE is not responsible for any damage or loss resulting from the use of this information.

KANSAS CITY DISTRICT MISSOURI RIVER AREA OFFICE	
Submitted By:	MIRAO
Reviewed By:	MIRAO
Approved By:	MIRAO

Survey Information

MO_02_LMR
MO_02_LMR_20210503_CS_177_7_180_1_SORT
03 May 2021

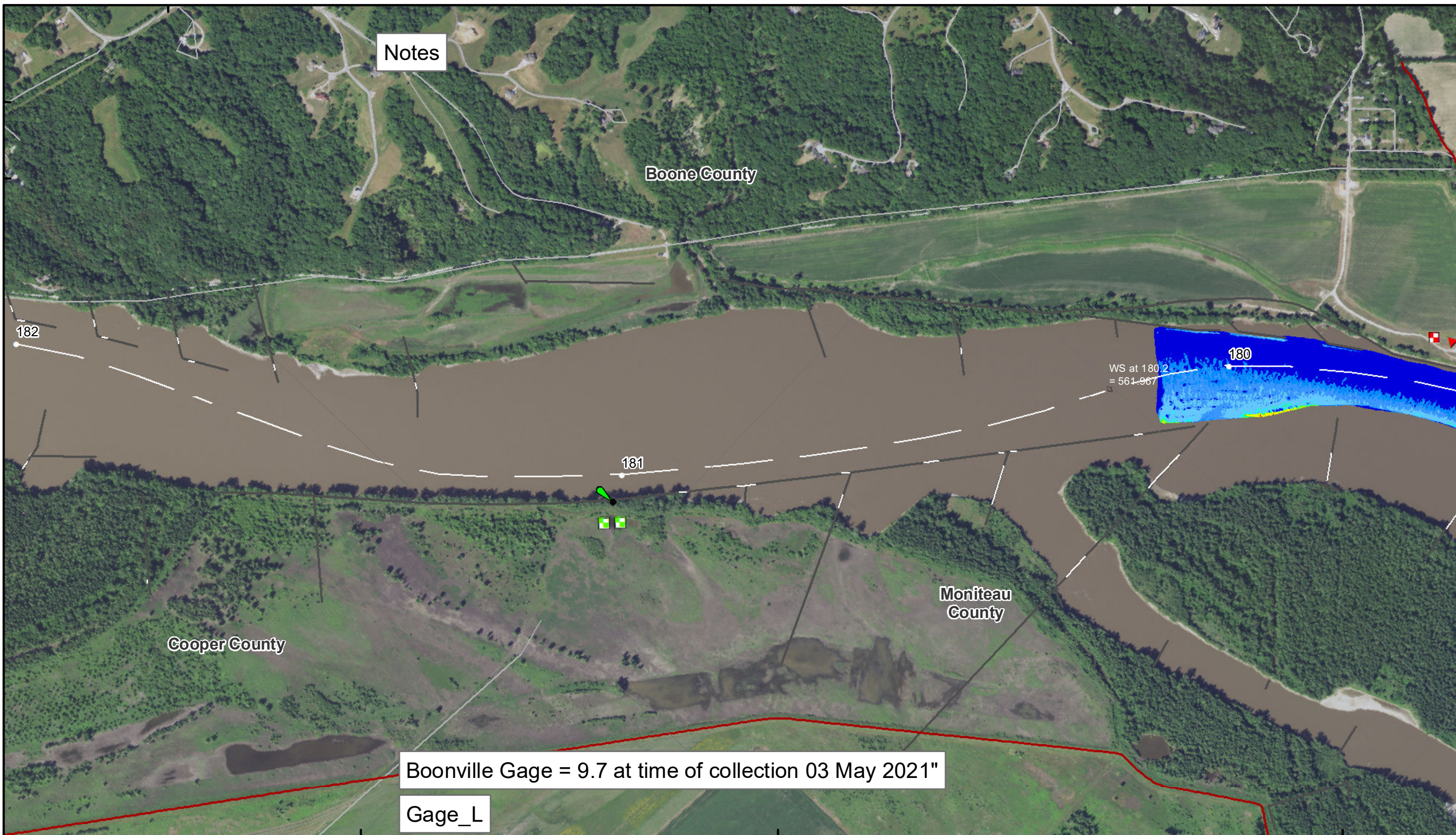
Sheet Number
36 of 46

38°56'N

92°29'W

38°55'N

92°30'W



Notes

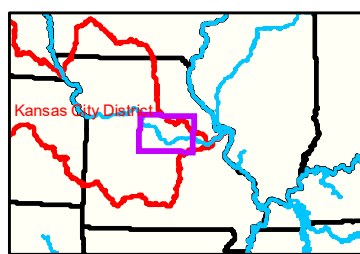
Boone County

Moniteau County

Cooper County

Boonville Gage = 9.7 at time of collection 03 May 2021"

Gage_L



LEGEND

	< 8		< 8 ft		Green Passing		Green		AIS Green CAN
	8 - 9		8 - 9 ft		Red Passing		Red		AIS Red NUN
	9 - 9.5		9 - 10 ft		Green Crossing		Green CAN		Green CAN
	9.5 - 10		10 - 12 ft		Red Crossing		Red NUN		Red NUN
	10 - 12		River Mile		BSNP Structure		Junction		
	12 - 14		Sailing Line		Levee				
	14 - 16								
	> 16								

Scale: 0 312.5 625 937.5 1,250 2,500 Feet

NOTES:
 Horizontal Coordinate System: World Geodetic System of 1984 (WGS84), projected to the Universal Transverse Mercator (UTM) Zone 15 North. Distance units in U.S. Survey Feet.
 Vertical Datum: Soundings are shown in feet and indicated depths are referenced to water surface at time of collection.
 The information depicted on this map represents the results of a survey conducted on the date indicated and can only be considered to represent the general condition existing at that time.
 The location of navigation aids are based on and provided by the U.S. Coast Guard.



DISCLAIMER: The U.S. Army Corps of Engineers (USACE) provides this information for informational purposes only. It is not intended for use in any legal proceeding or as a basis for any claim. The USACE makes no warranty, express or implied, regarding the accuracy, completeness, or timeliness of the information provided. The user assumes all liability for any use of this information. The USACE is not responsible for any errors or omissions in this information. The USACE is not responsible for any damages, including consequential damages, arising from the use of this information. The USACE is not responsible for any loss of data or information. The USACE is not responsible for any loss of profit or business. The USACE is not responsible for any loss of income. The USACE is not responsible for any loss of reputation. The USACE is not responsible for any loss of goodwill. The USACE is not responsible for any loss of opportunity. The USACE is not responsible for any loss of time. The USACE is not responsible for any loss of money. The USACE is not responsible for any loss of property. The USACE is not responsible for any loss of anything else.

KANSAS CITY DISTRICT MISSOURI RIVER AREA OFFICE	
Submitted By:	MIA/O
Reviewed By:	MIA/O
Approved By:	MIA/O

Survey Information
 MO_02_LMR
 MO_02_LMR_20210503_CS_177_7_180_1_SORT
 03 May 2021

Sheet Number
 37 of 46